

中 化 克 化 公  
保

DD G-2021- S-018

位 中 化 克 化 公  
制 位 光 公  
二 二一 八



201249100

201249100

0995 8857000

0995 8857000

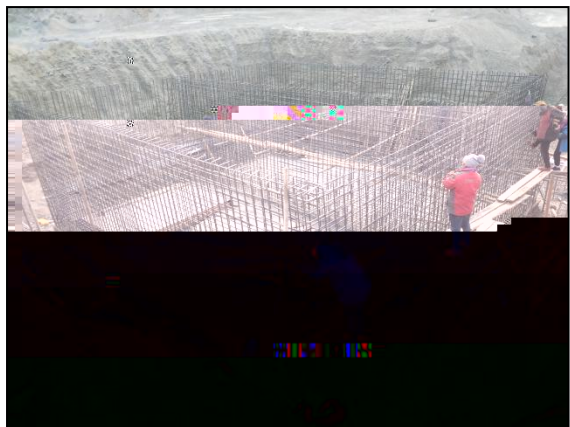
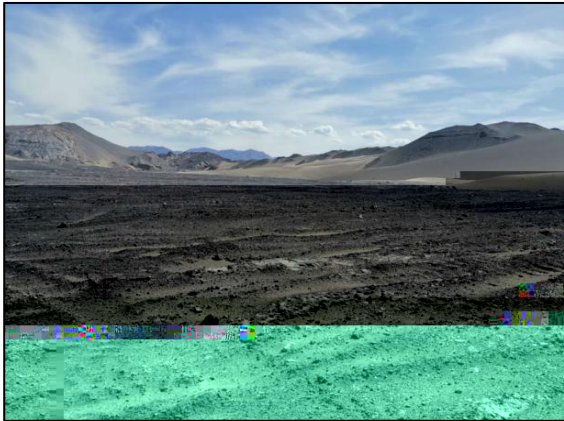
838100

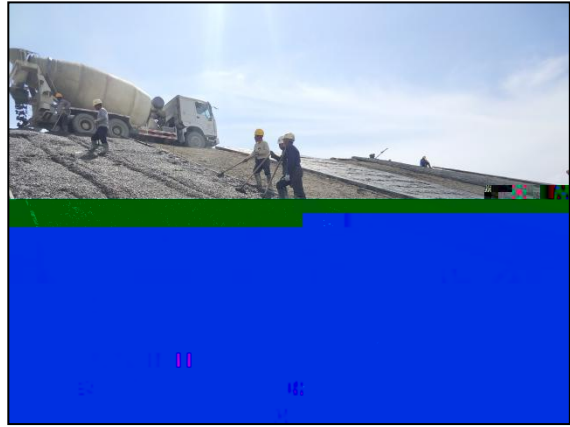
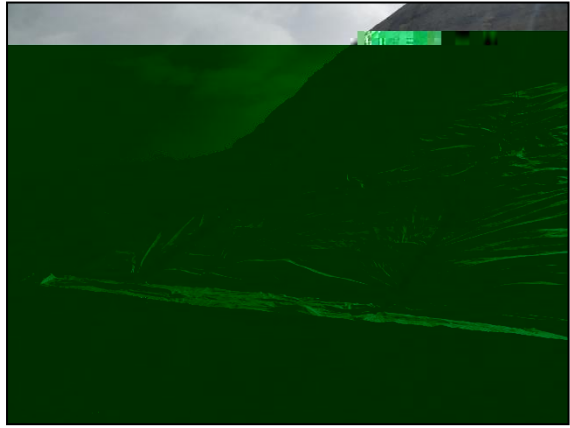
0991 6614769

0991 6614769

830000









2.1 .....  
2.2 .....  
2.3 .....  
2.4 .....  
2.5 .....  
2.6 .....  
2.7 .....  
  
3.1 .....  
3.2 .....  
3.3 .....  
3.4 .....  
3.5 .....  
3.6 .....  
3.7 .....  
3.8 .....  
3.9 .....  
3.10 .....  
  
4.1 .....  
4.2 .....  
  
5.1 .....  
5.2 .....  
5.3 .....  
5.4 .....  
5.5 .....  
5.6 .....

---

5.7 .....

6.1 .....

6.2 .....

6.3 .....

6.4 .....

7.1 .....

7.2 .....

7.3 .....

7.4 .....

8.1 .....

8.2 .....

8.3 .....

8.4 .....

9.1 .....

9.2 .....

9.3 .....

10.1 .....

10.2 .....

10.3 .....

10.4 .....

10.5 .....

10.6 .....

11.1 .....

11.2 .....



---



---

2021 6 10 12

2021 6 24 25

1. 2015 1 1

2. 2018 12 29

3. < >

682 2017 10 1

4. 2017 4

2017 11 22

5.

2015 113

6.

2019 140

2019 11 13

---

7.  
HJ/T394-2007

-

1.

2019 7

2.

2019 314

2019 12 9

3.

2018 61 2018

12 3

4.

2018 69

2018 12 4

5.

2018078 2018

12 6

6.

<

>

2019 8 21

7.

---

1

2

3

1

2

3

4

5

1

2

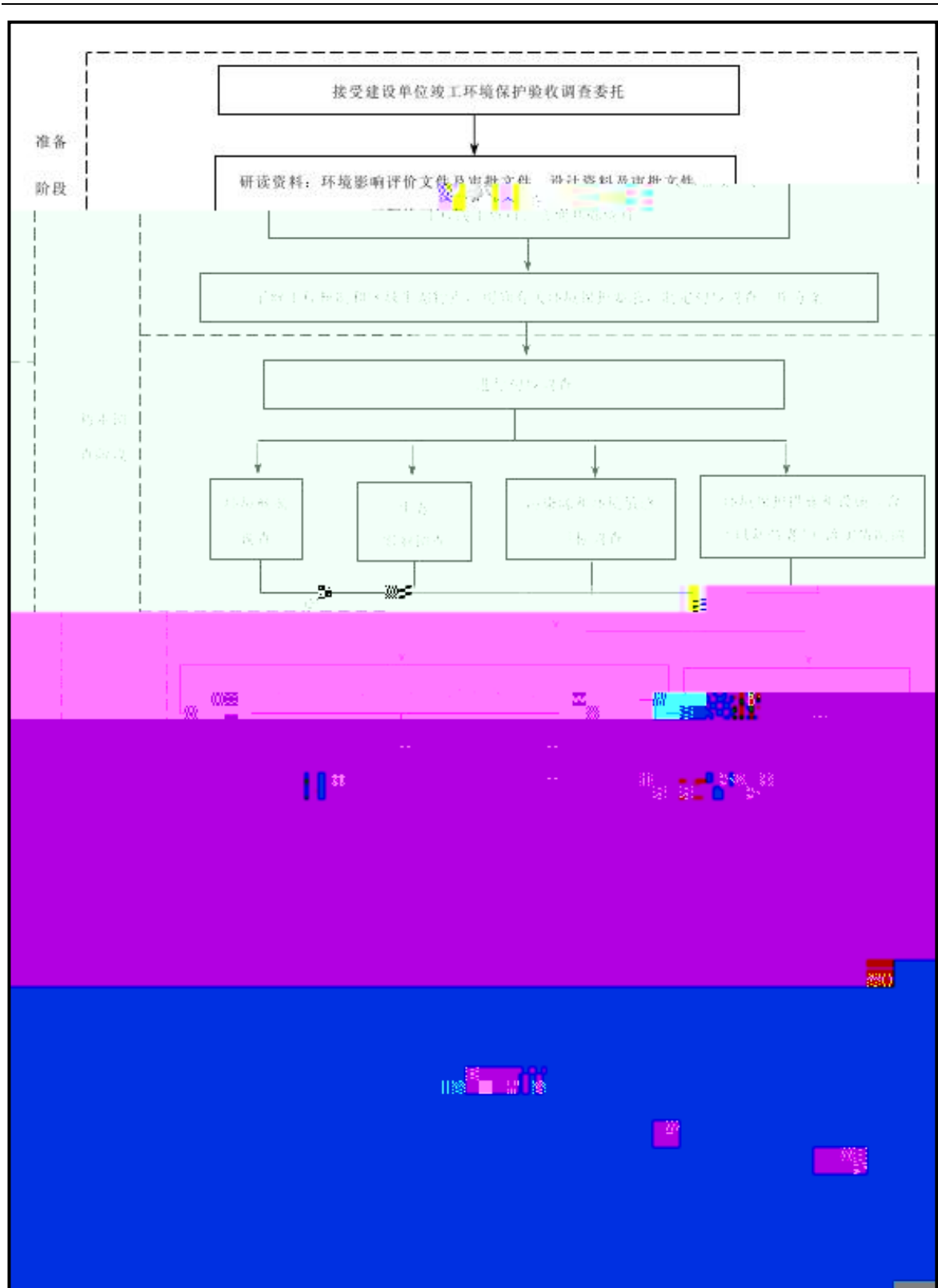
---

3

4

5

2.3-1



---

1

2

3

4

5

6

2.5-1

2.5-1

	2.5-1		
		1	
		2.5	
	2	3	6 <sup>2</sup>
		200	



1

2

3

4

5



12

5

42 37'59.30"

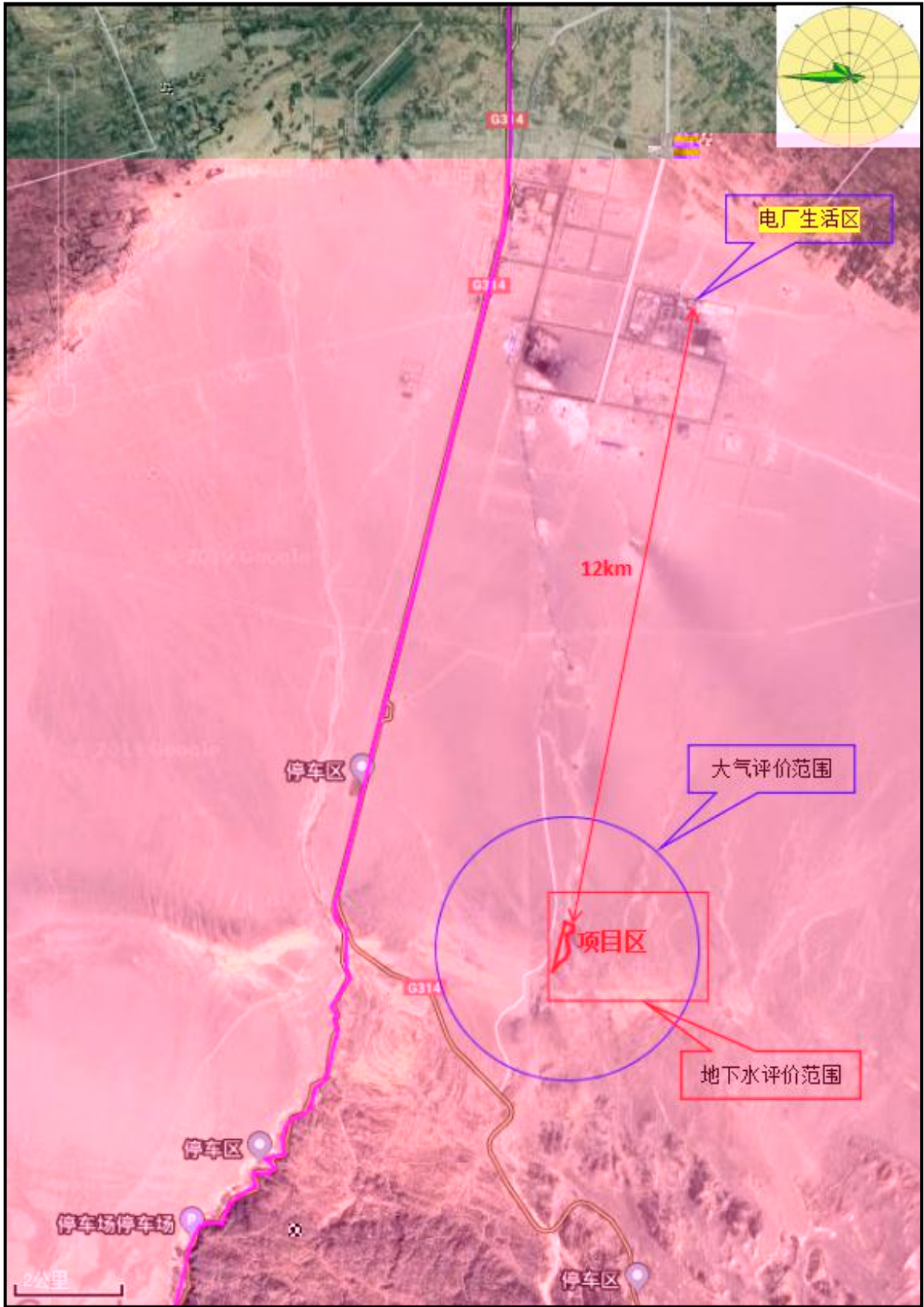
88 37'27.19"

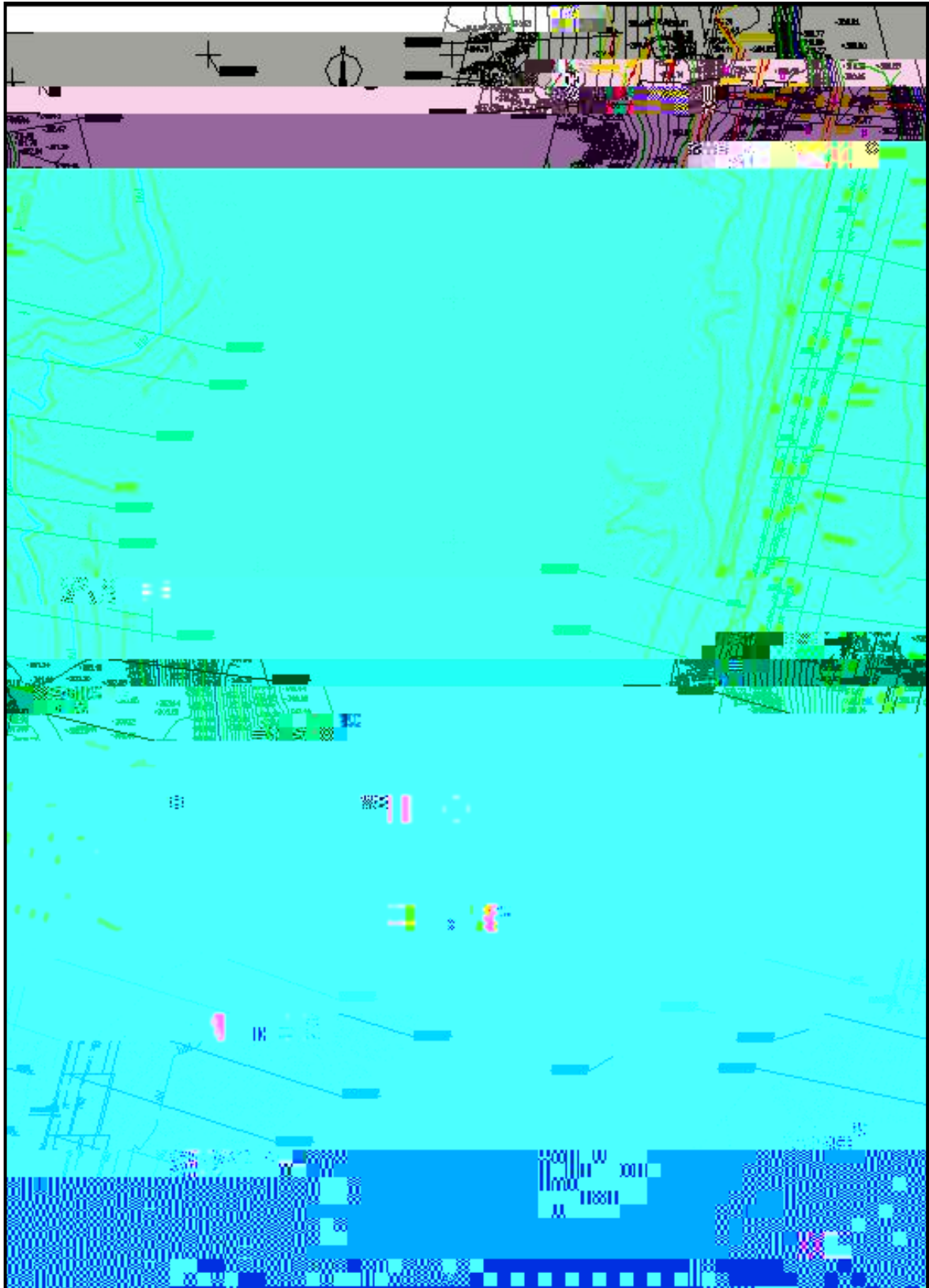
3.1-1

3.1-2

3.1-3







II

210 3 6 13.6  
 110 3 22.97 6 10.16  
 3.2-1 3.2-2

3.2-1

				12
		13.6	210 3	3 18
		10.16	110 3	3 11
			6	
		4845	2015	41.6%
		2800	1120	40.0%
			10.16	
			2020 10	
			2021 6	
			330	
			5	

---

3.2-2

6.0	1:1.5	10.0	4.0	1:2.0	11.0
	300	160		54	
27.0	6.0	1:2.0	120	4.0	1:2.0
944		100	11.0	4.0	120
	500 1500		944	500 0	
1:2.0	26.0	6.0			
	73				
	100				
	600 2000				

		500	300 1.0 10 <sup>-4</sup> /	D=16-32 +
				/
		1		1
		2		2800
		3		8
		4		2
			HDPE	3
				4





2 300MW

110 /

3.3-1

3.3-2

3.3-1

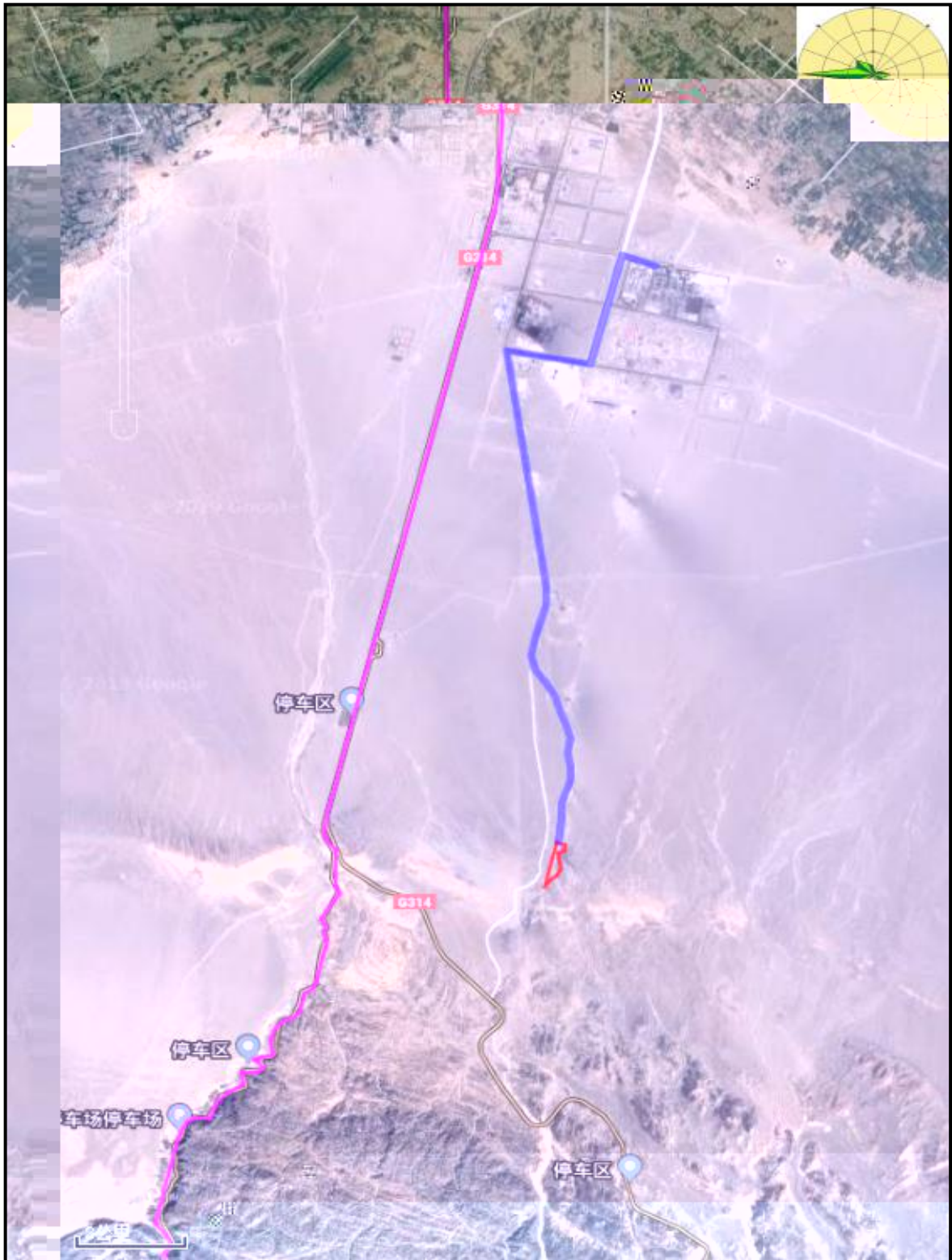
1	2 300MW		0	II	
			56700	II	
			72960	II	
2	110 /		100000	II	
			229660		

3.3-2

	S O <sub>2</sub>	A <sub>2</sub> O <sub>3</sub>	F <sub>2</sub> O <sub>3</sub>	C SO <sub>4</sub> 2 H <sub>2</sub> O	C O				
	45.40	21.95	7.89	-	5.72	1.46	-	-	-
	43.18	17.40	9.68	-	12.17	9.19	-	-	-
	-	-	-	90	-	-	-	-	4
	-	0.46 7 .54	0.20 1.69	-	33.07 6 1.99	-	0.30 7.1 9	0.72 9.0 4	52.7 99. 2

12

3.4-1



---

3.5-1

3.5-1

1			4	4
2			4	4
3			2	2
4			2	2
5			2	2
6			2	2

:

WIPED

ET#2 • 5p,,%ov# %o G P 3PW 5p^• 5

S

---

GB8978-1996

3

5

330

4845

2015

41.6%

2800

1120

40%

3.9-1

1			3	2.6
2			2	3.6
3		200 <sup>3</sup> +	50	56
4			10	9.6
5			1500	1013.2
6			400	0
7			50	35

	2015	1120
--	------	------

2019 314

3.10-1

3.10-1

1		13.6 210 3 18	3 6	10.16 110 3 11 6
2				8 2800



	12	5
	42 37'59.30"	88 37'27.19"
10.16	110 <sup>3</sup>	3 11
6	2800	1120
40%		

II

2011

2013

15



---

0.044 / 0.158 / 1.38 /

3.8 <sup>3/</sup>

1387 <sup>3/</sup>

1

200 <sup>3</sup>

50 60 B A

1

2

+



3

GB12348-2008 2

60 B A

50 B A

4

5

1



2

2 HDPE

3

---

$3 \cdot 10^{-6} /$

12

5

SO<sub>2</sub> NO

---

2019 12 9 2019  
314  
G314 2.6 12  
I 1079 /  
136000 210 6  
4845  
2015 41.6%  
2019 287  
2019 208

---

GB16297-1996

---

I

> 2015 4

---

20

13.6

10.16

3.44

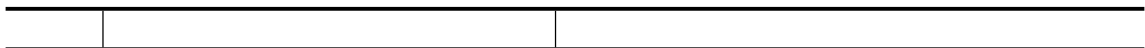
5%



---

5.5-1

5.5-1



1		
2		

1

3

2

C P C C<sup>6+</sup> N A H 7

5.6-1

5.6-1

1#	N42 35'36" E88 36'28"		C P C C <sup>6+</sup> N A H 7
2#	N42 35'38" E88 36'29"		
3#	N42 35'41" E88 36'38"		

3

5.6-2

5.6-2

C	17141-1997	GB/T 0.01 /

---



200<sup>3</sup> +

88 37'09.05"	42 37'37.08"	394.3	300
120			88 37'19.81"
42 40'10.04"	237.5	300	220

---

6.3-1

6.3-1

1		
2		
3		200 <sup>3</sup> +
4	+300 +600 /	+2 +500 HDPE
5		

1

2

200<sup>3</sup> +

3



1

NO

CO

HC

2

---

1

4

2

3

7.2-1

7.2-1

1		GB/T15432-95	0.001 / 3

4

7.2-2

7.2-3

7.2-2

			K	/	
2021.06.24	10:43	31.3	96.7	2.1	
	11:57	38.6	96.9	2.0	
	13:13	42.3	96.9	2.0	
	14:29	42.6	96.9	1.9	
2021.06.25	10:38	32.5	96.6	2.2	
	11:53	35.6	96.9	2.0	
	13:17	38.9	96.9	2.1	
	14:38	40.7	96.9	2.0	

1#	2021.06.24	10:43	0.341
		11:57	0.370
		13:13	0.301
		14:29	0.437
2#		10:43	0.448
		11:57	0.358
		13:13	0.411
		14:29	0.350
3#		10:43	0.380
		11:57	0.368
		13:13	0.485
		14:29	0.252
4#		10:43	0.321
		11:57	0.379
		13:13	0.427
		14:29	0.301
1#	2021.06.25	10:38	0.244
		11:53	0.272
		13:17	0.390
		14:38	0.282
2#		10:38	0.389
		11:53	0.243
		13:17	0.409
		14:38	0.321
3#		10:38	0.399
		11:53	0.428
		13:17	0.428
		14:38	0.497
4#		10:38	0.311
		11:53	0.234
		13:17	0.321
		14:38	0.233
			0.485
			1.0



7.3-1

7.3-1

1		
2		
3		
4		
5		
6		

1

2

---

1

8

8.2-1

	8	A L	1 2

2

A L

3

1

2

4

GB12348 2008

AWA6218B

5

## 8.2-2

8.2-2				B A				
1#	1	46	48	60		45	42	50
2#	1	46	47			42	44	
3#	1	47	47			44	42	
4#	1	47	46			44	42	
5#	1	48	48			45	43	
6#	1	48	47			44	41	
7#	1	48	47			42	43	
8#	1	45	47			43	42	

GB12348-2008 2

## 8.3-1

## 8.3-1

1		

GB12348-2008 2



5

912.5 /



2018 12 6

2018078

2018 12 3

2018 61

2018 12 4

2018

69

2019 8 21

2019 7

2019 12 9

2019

314

2020 10

2021 6

---

6504222021004

10.8-1

1	<p>2.6</p> <p>12 G314</p> <p>I</p> <p>1079 / 136000 210</p> <p>6</p> <p>4845 2015 41.6%</p>	<p>10.16 110 6</p> <p>2800 1120</p> <p>40%</p>
2	<p>GB16297-1996 2</p>	<p>GB16297-1996 2</p>
3	<p>CB18599-2001</p> <p>+</p>	<p>+ 200<sup>3</sup></p>
4	<p>CB12348-2008 2</p>	<p>8 GB12348-2008 2</p>

---

5	GB18599-2001	I	70%			70%	
6		>	2015	4	+2	HDPE	+600 / +300



---

---

---

1

2